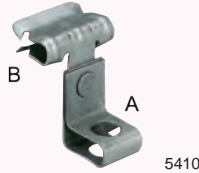




CLAMPS

PART NUMBER	SIZE
rR23000001	M6



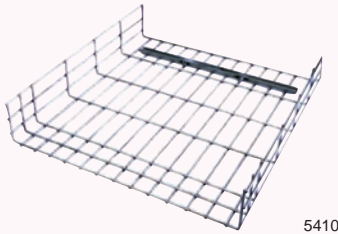
CLAMPS

PART NUMBER	Ø SIZE A	RANGE B
rR233000001	11 mm	3 – 8 mm
rR233000002	11 mm	8 – 14 mm
rR233000003	11 mm	14 – 20 mm



CLAMPS

PART NUMBER	SIZE
rR234000001	9 mm
rR234000002	M8



**SUPPORTING GRID
5 MM**

PART NUMBER	LENGTH	HEIGHT
rR090305000	306 mm	104.5 mm
rR090505000	546 mm	104.5 mm



COUPLING KIT

PART NUMBER	FOR USE WITH
rR09080100	Supporting Grid



WALL MOUNTING BRACKET

PART NUMBER	SIZE
rR228170000	170 mm
rR228320000	320 mm
rR228520000	520 mm



**COLLAR WITH SCREW
M8/10**

PART NUMBER	TUBE OD
rR240020000	20 mm
rR240025000	25 mm
rR240032000	32 mm
rR240040000	40 mm
rR240050000	50 mm
rR240063000	63 mm



SCREW

PART NUMBER	SIZE
rR230000000	M8



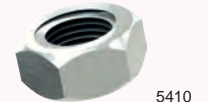
THREADED HOSE COUPLING

PART NUMBER	SIZE	LENGTH
rR230000003	M8	30 mm



**THREADED ROD
GALVANISED**

PART NUMBER	SIZE	LENGTH
rR230000006	M8	1000 mm



THREADED NUT

PART NUMBER	SIZE	LENGTH
rR230000004	M8	6.5 mm



WASHER

PART NUMBER	DESCRIPTION
rR230000005	2 mm x 8.5 mm

Do you also need?

PARKAIR®

**M10 – M12
Screwed rod**



Find it on page 801, section thirteen